

Process to Incorporate a City

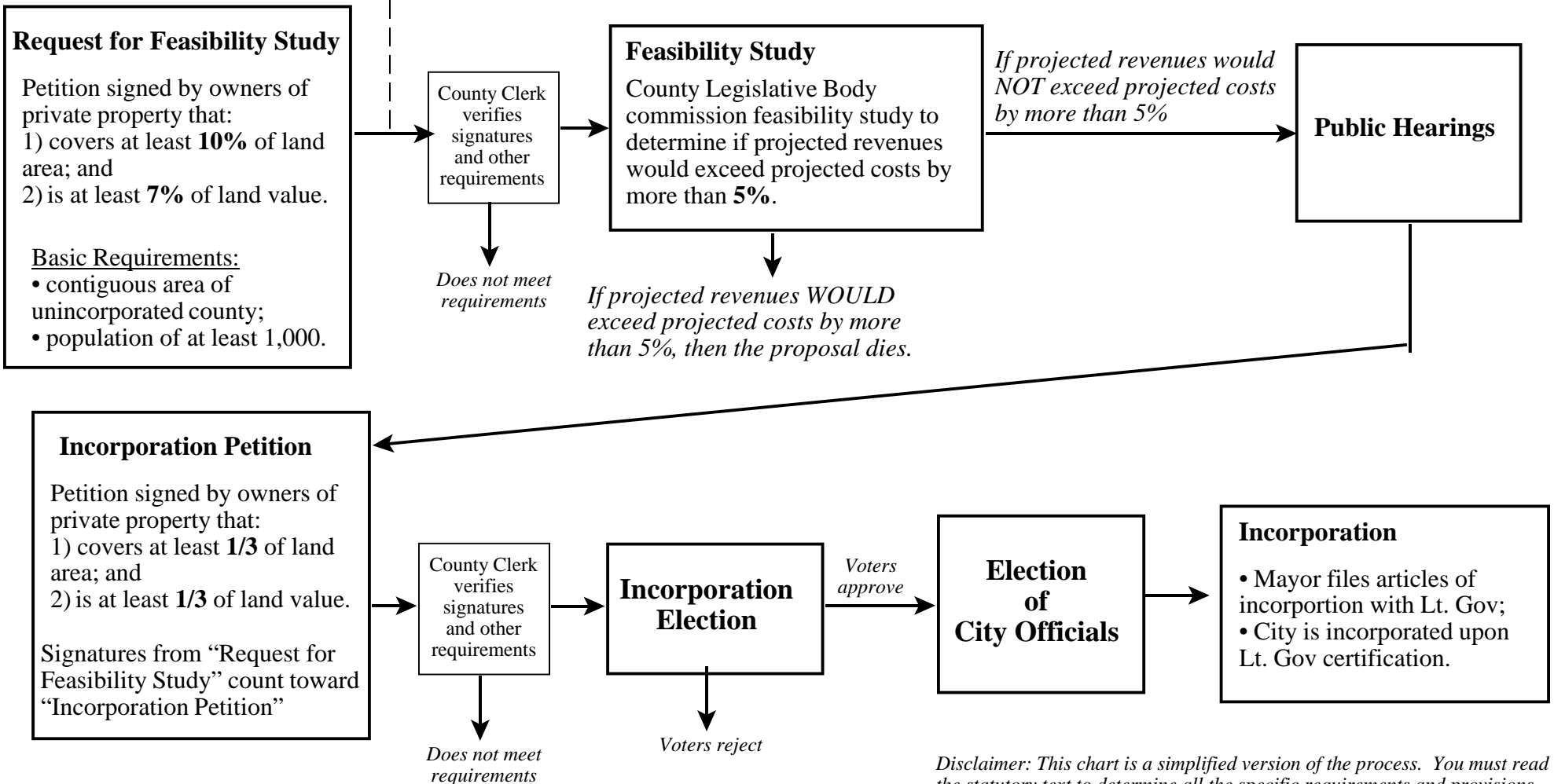
Large Property Owners May Opt Out

Large property owners may opt out if property:

- is more than 1% of total assessed value;
- is currently nonurban;
- will not need municipal-type services; and
- exclusion will not leave an unincorporated island.

(Applies only to first and second class counties)

Start Here



Disclaimer: This chart is a simplified version of the process. You must read the statutory text to determine all the specific requirements and provisions. Most of the provisions are found in Title 10, Chapter 2, Part 1, Incorporation, Utah Code Annotated.